

180° Angular Gripper *Series CKY*

Specifications



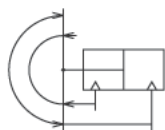
Fluid	Air
Operating pressure	0.1 to 0.6MPa
Ambient and fluid temperature	-10 to 60°C
Repeatability	±0.2mm
Max. operating frequency	60c.p.m
Lubrication	Not required
Action	Double acting
Auto switch (Optional) ^{Note)}	Solid state switch (3 wire, 2 wire)



Note) Refer to p. 6-15 for details of auto switch specifications.

Symbol

Double acting



Model

Model	Bore size (mm)	Effective holding force (Nm) ⁽¹⁾	Opening angle (Both sides)		Weight ⁽²⁾ (g)
			Opening side	Closing side	
CKY-10D	10	0.16	180°	-3°	70
CKY-16D	16	0.54			150
CKY-20D	20	1.10			320
CKY-25D	25	2.28			560



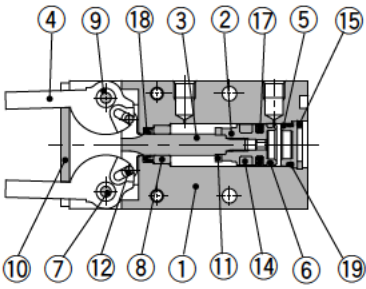
Note 1) At the pressure of 0.5MPa

Note 2) Not including auto switch

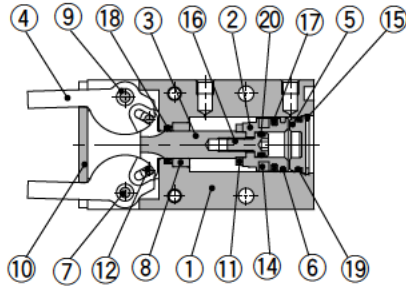
Construction

Closed

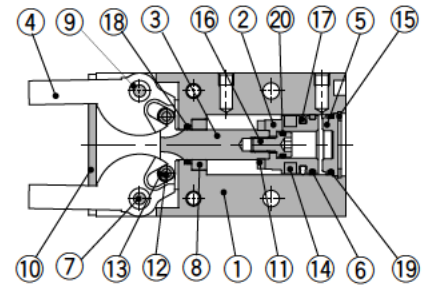
ø 10



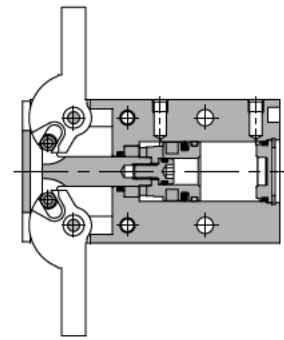
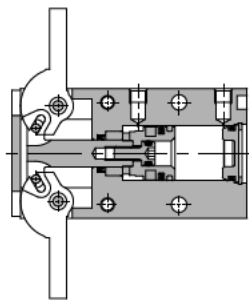
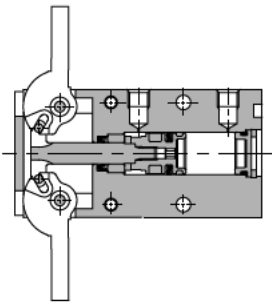
ø 16



ø 20, ø 25

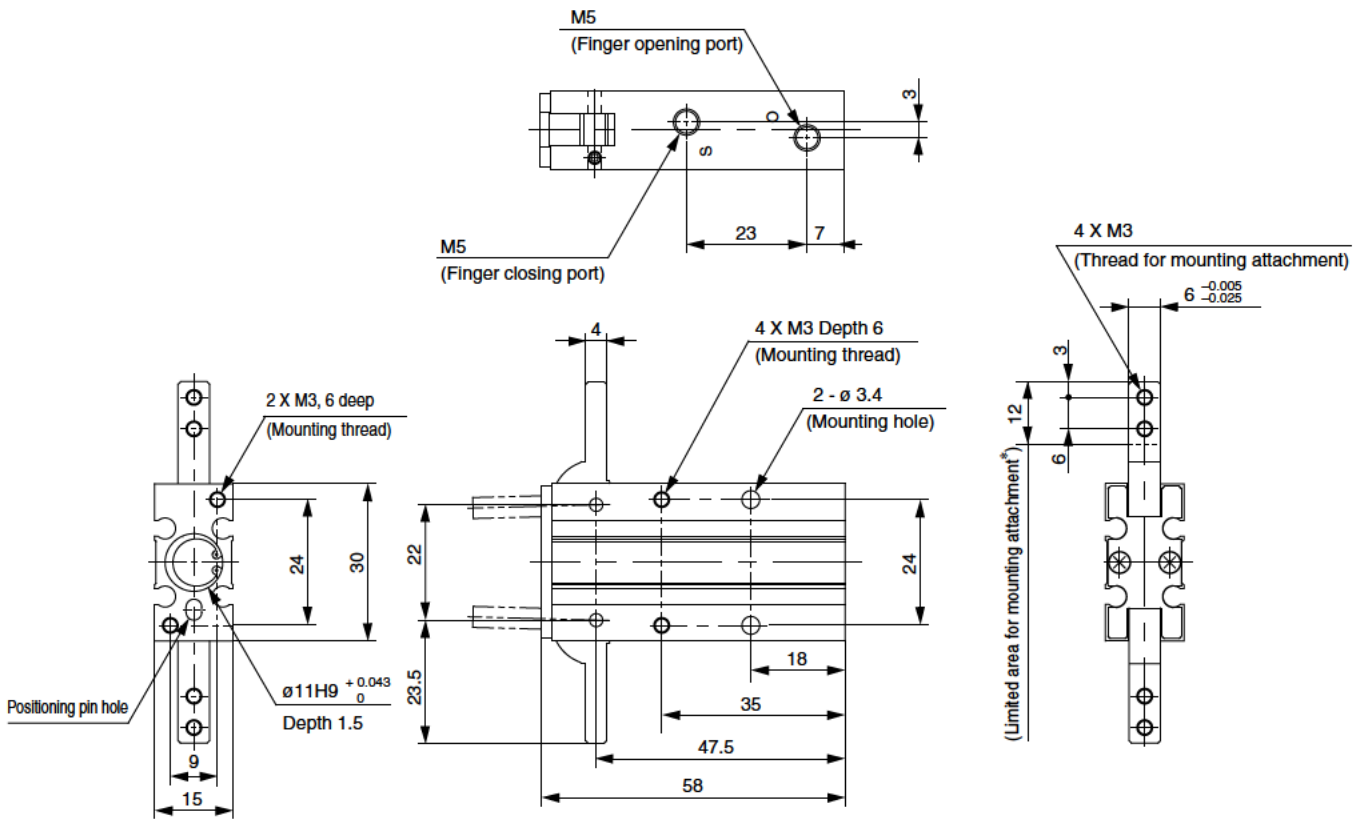


Open

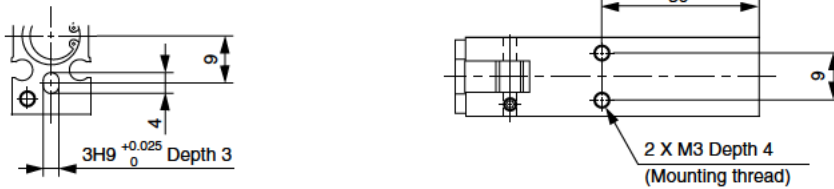


Dimensions

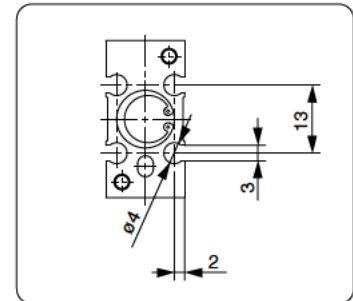
CKY-10D



Pin hole positioning

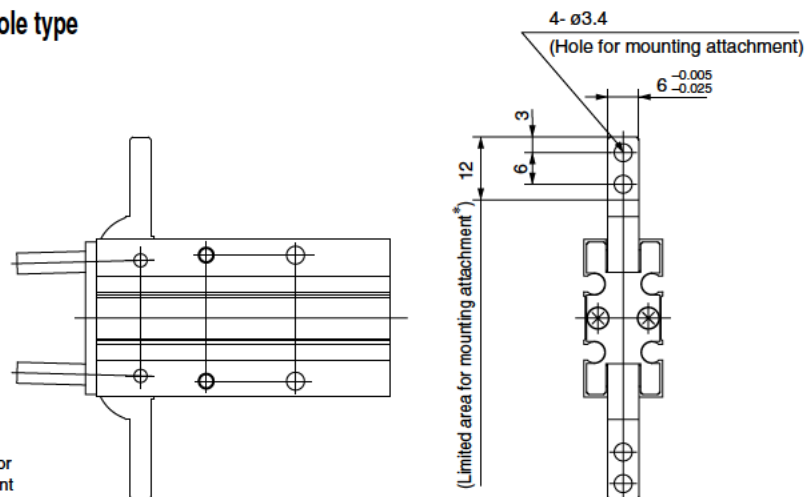


Auto switch mounting groove position



CKY-10D2

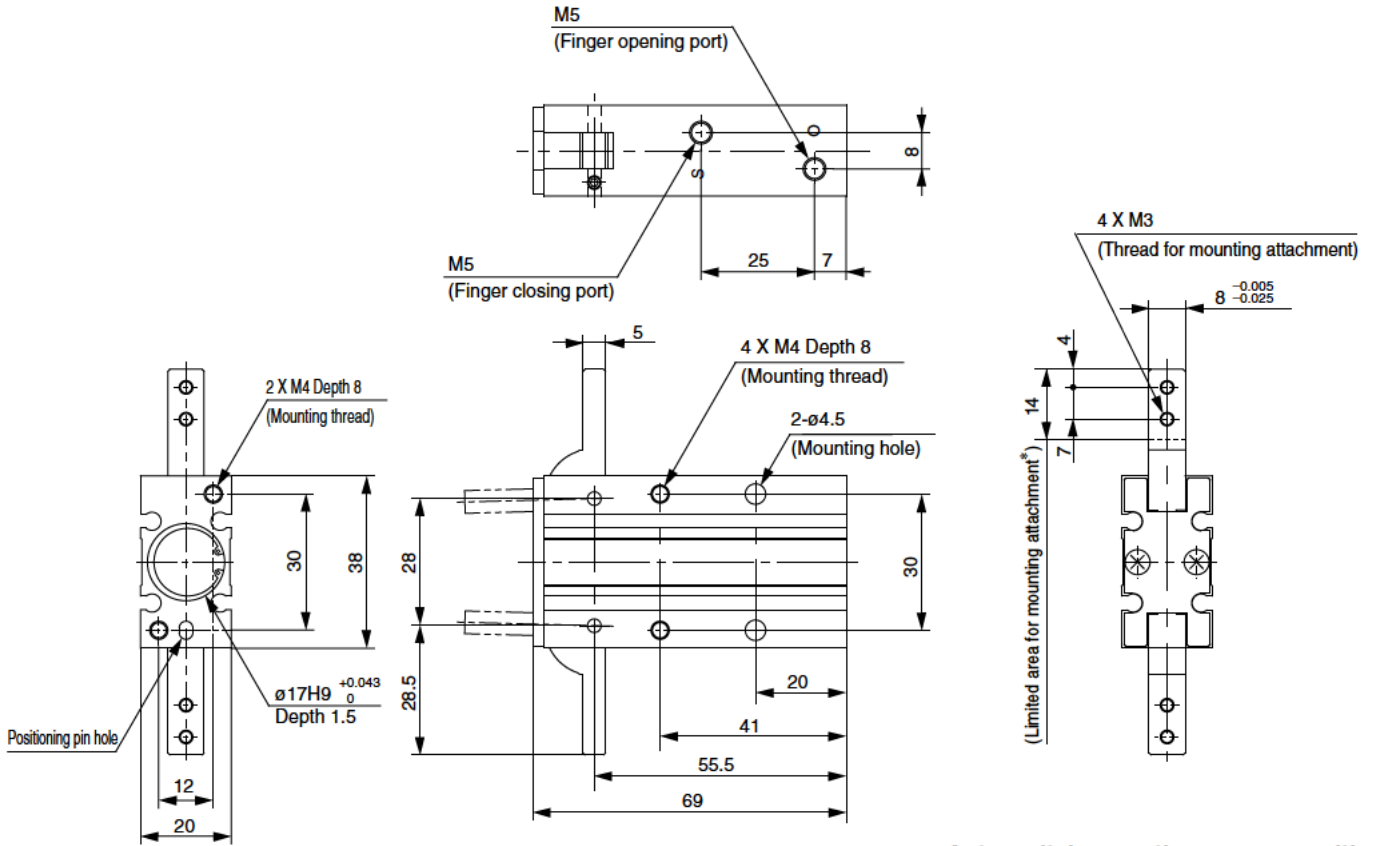
Opening/closing direction through hole type



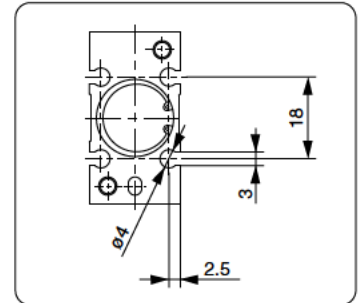
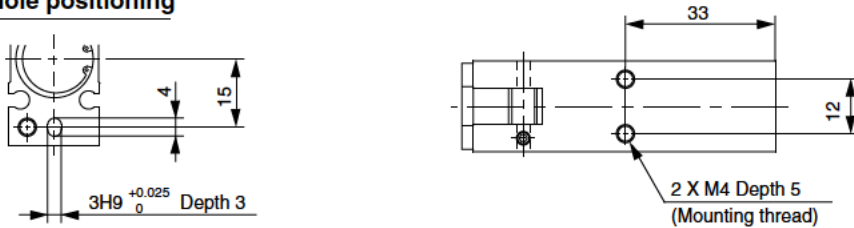
* Do not extend the attachment from limited area for mounting to avoid interference with the attachment or main body.

Dimensions

CKY-16D

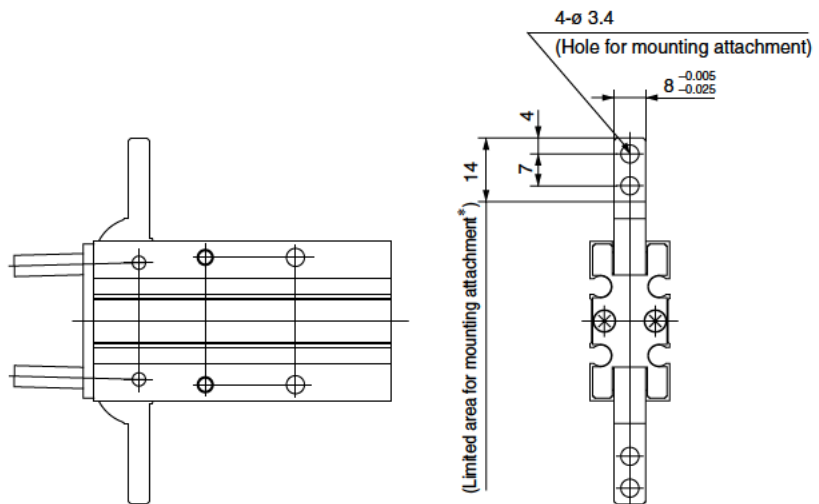


Pin hole positioning



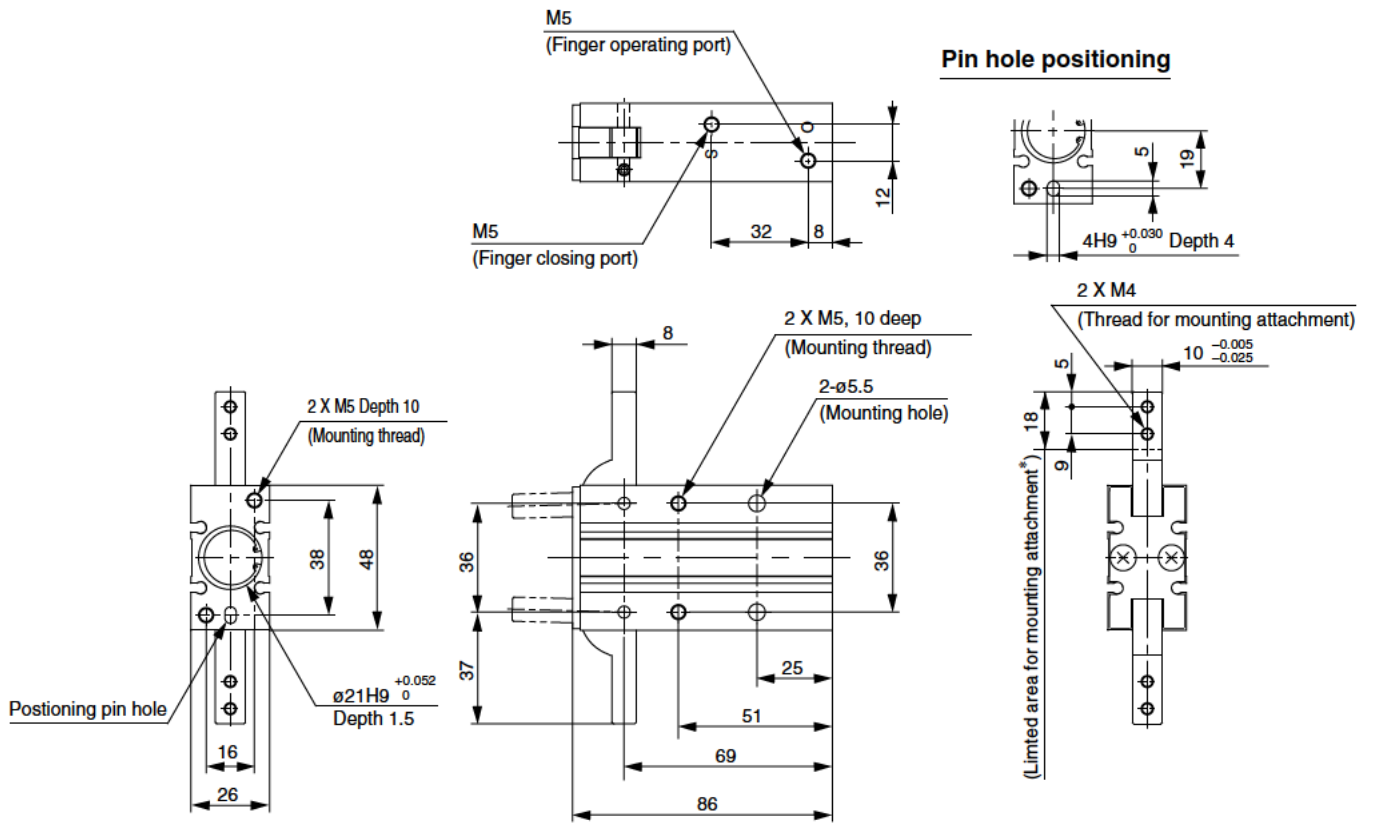
CKY-16D2

Opening/closing direction through hole type



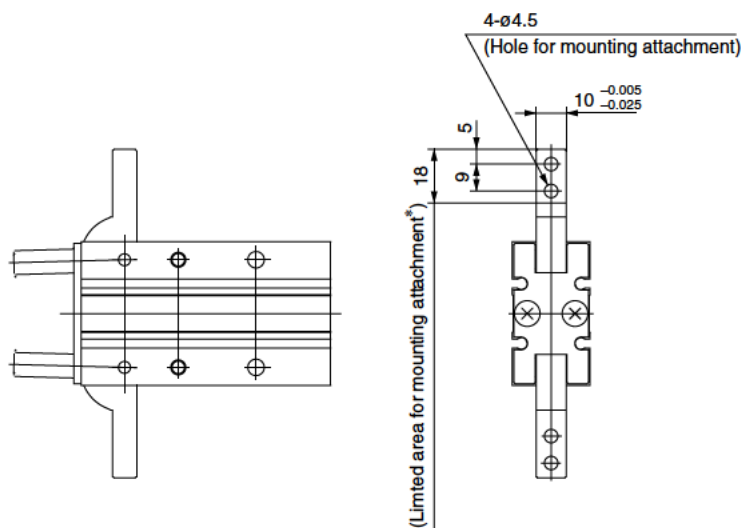
* Do not extend the attachment from limited area for mounting to avoid interference with the attachment or main body.

CKY-20D



CKY-20D2

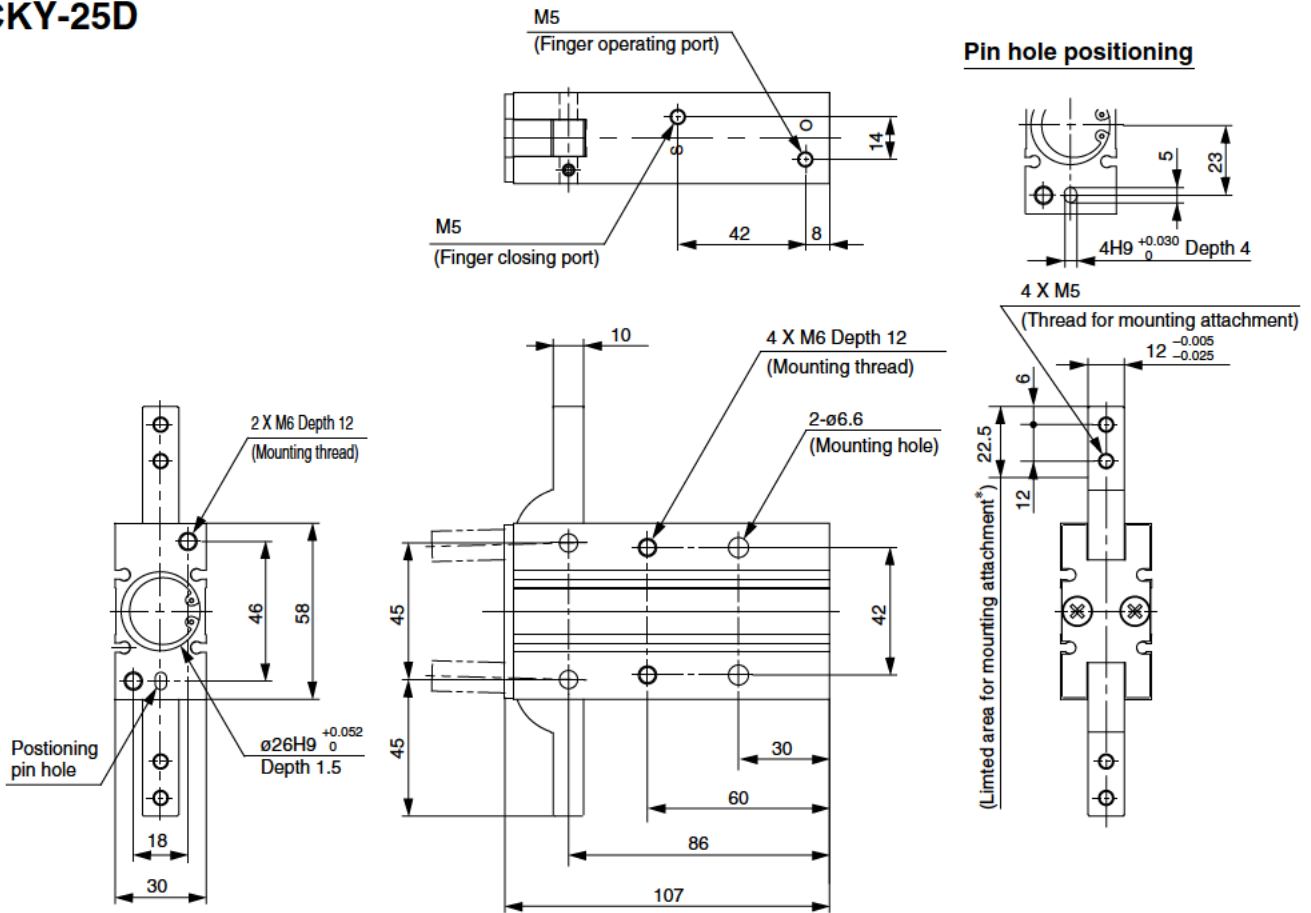
Opening/closing direction through hole type



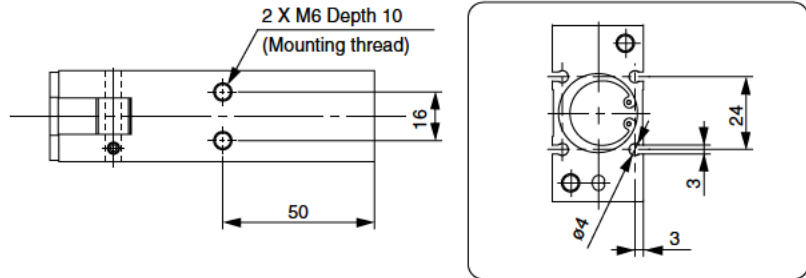
* Do not extend the attachment from limited area for mounting to avoid interference with the attachment or main body.

Dimensions

CKY-25D

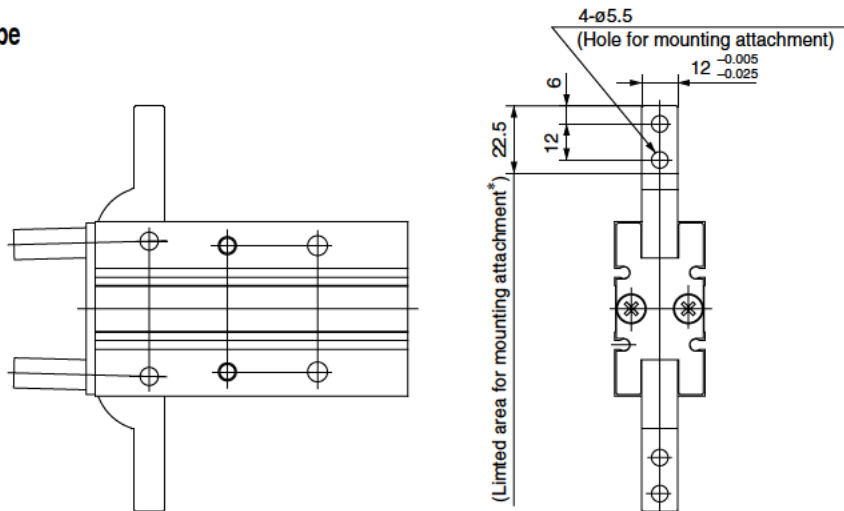


Auto switch mounting groove position



CKY-25D2

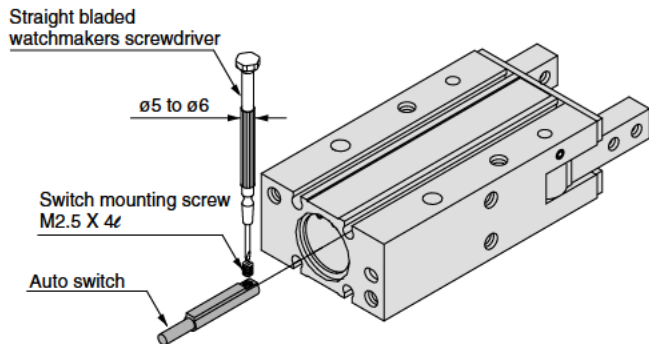
Opening/closing direction through hole type



* Do not extend the attachment from limited area for mounting to avoid interference with the attachment or main body.

Setting Method of Auto Switch

To set the auto switch, insert the auto switch into the installation groove of the gripper from the direction indicated in the following drawing. After establishing the installation position, tighten the attached switch mounting screw with a straight bladed watchmakers screwdriver.

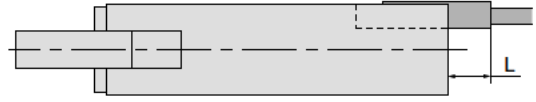


Note) Use a watchmakers screwdrivers with a grip diameter of 5 to 6 mm to tighten the auto switch mounting screw. Use a tightening torque of 0.05 to 0.1 Nm. As a rough guide, tighten the screw an additional 90° after feeling a tighten resistance.

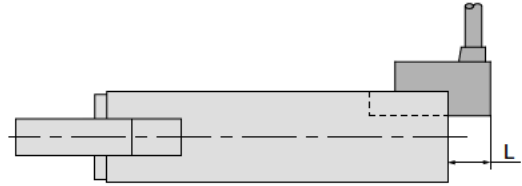
Projection of Auto Switch from Body Edge

The projection of an auto switch from the edge of the body is shown in the table below. Use the table as a guideline for mounting.

Note) 2 color indicator type and perpendicular entry type protrude in the direction of the lead wire entry.



When auto switch D-M9N is used



When auto switch D-M9□V is used

