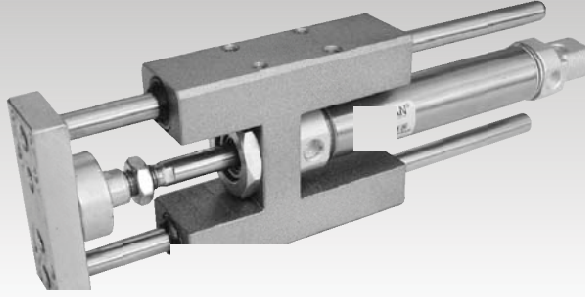


H Yataklar /

H Guides

ISO 15552 (DIN ISO 6431)



Sipariş Kodu / Ordering Code

KHRC 000 X 000
↓ ↓ ↓
Seri / Serie Strok-mm / Stroke-mm
Nominal Çap-mm / Piston Dia-mm

Teknik Çizim / Technical Drawing

Piston Ø	L2	
KHRC 20 KHBC 20	63	
KHRC 25 KHRC 25		

Teknik Özellikler

- DIN ISO 6432 Silindir ölçülerine uygundur.
- Ø 20 - 25 mm. ye kadar nominal çaplarda.
- Kılavuzlar bushing ve rulmanlı olabilmektedir.

Technical Specifications

- Produced according to DIN ISO 6432 cylinder dimension
- In nominal diameters Ø 20 - 25 mm.
- Brass bush or linear bearing type guiding available.

- H Yataklar /

- H Guides

ISO 15552 (DIN ISO 6431)

Sipariş Kodu / Ordering Code

HRC 000 X 000
Seri / Serie ↓ Strok-mm / Stroke-mm
Nominal Çap-mm / Piston Dia-mm

Teknik Çizim / Technical Drawing

Teknik Özellikler

Technical Specifics